

KEY PLAN
(SCALE - NTS)

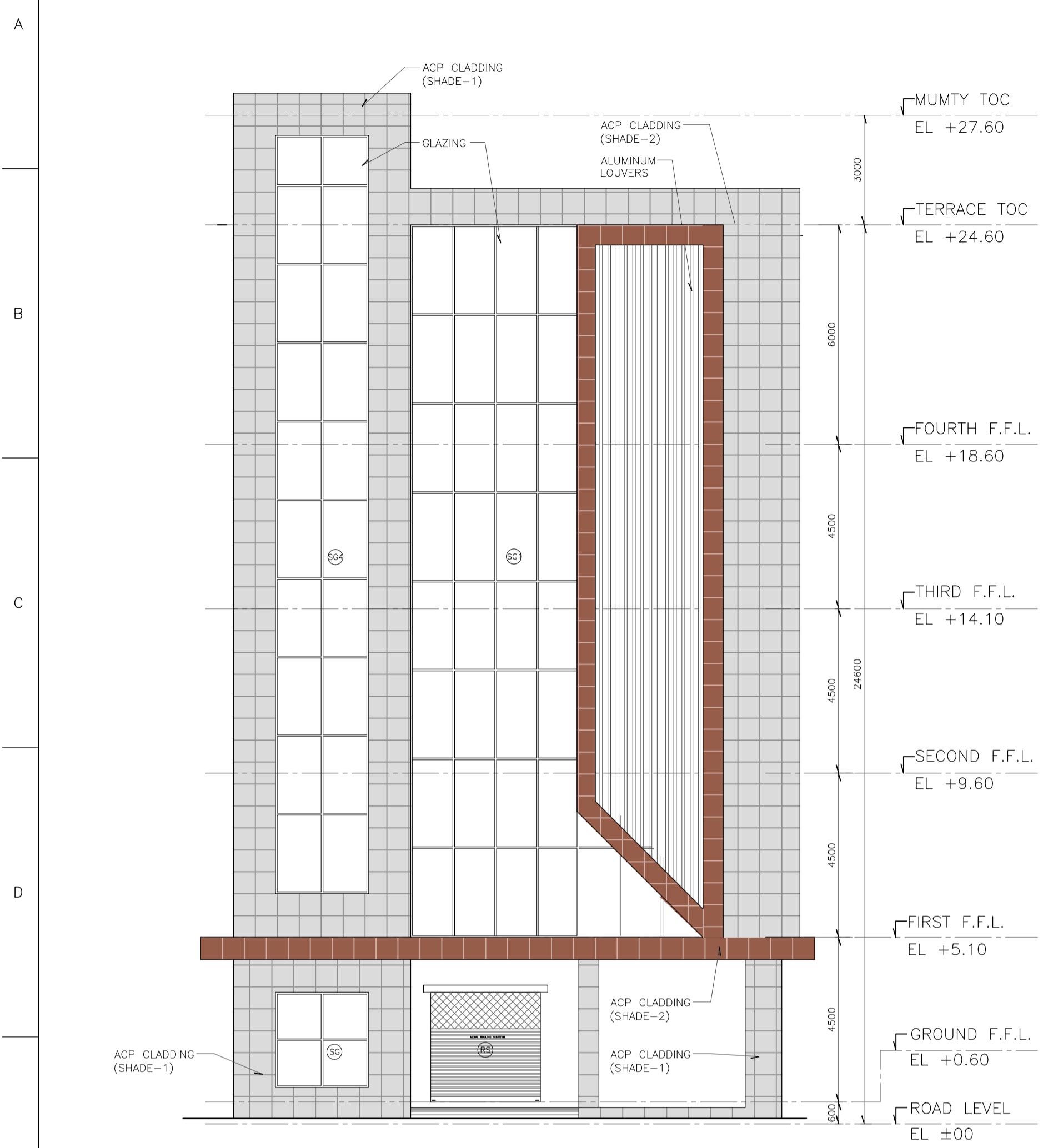
LEGEND:

	200/100 THK. BRICK MASONRY	FGL	FINISHED GROUND LEVEL
	DRAWING	RWP	RAIN WATER PIPE
	THICK/THICKNESS	SOM	SQUARE METER
	TREAD		
	RISER		
	TYPICAL		
	FINISHED FLOOR LEVEL		

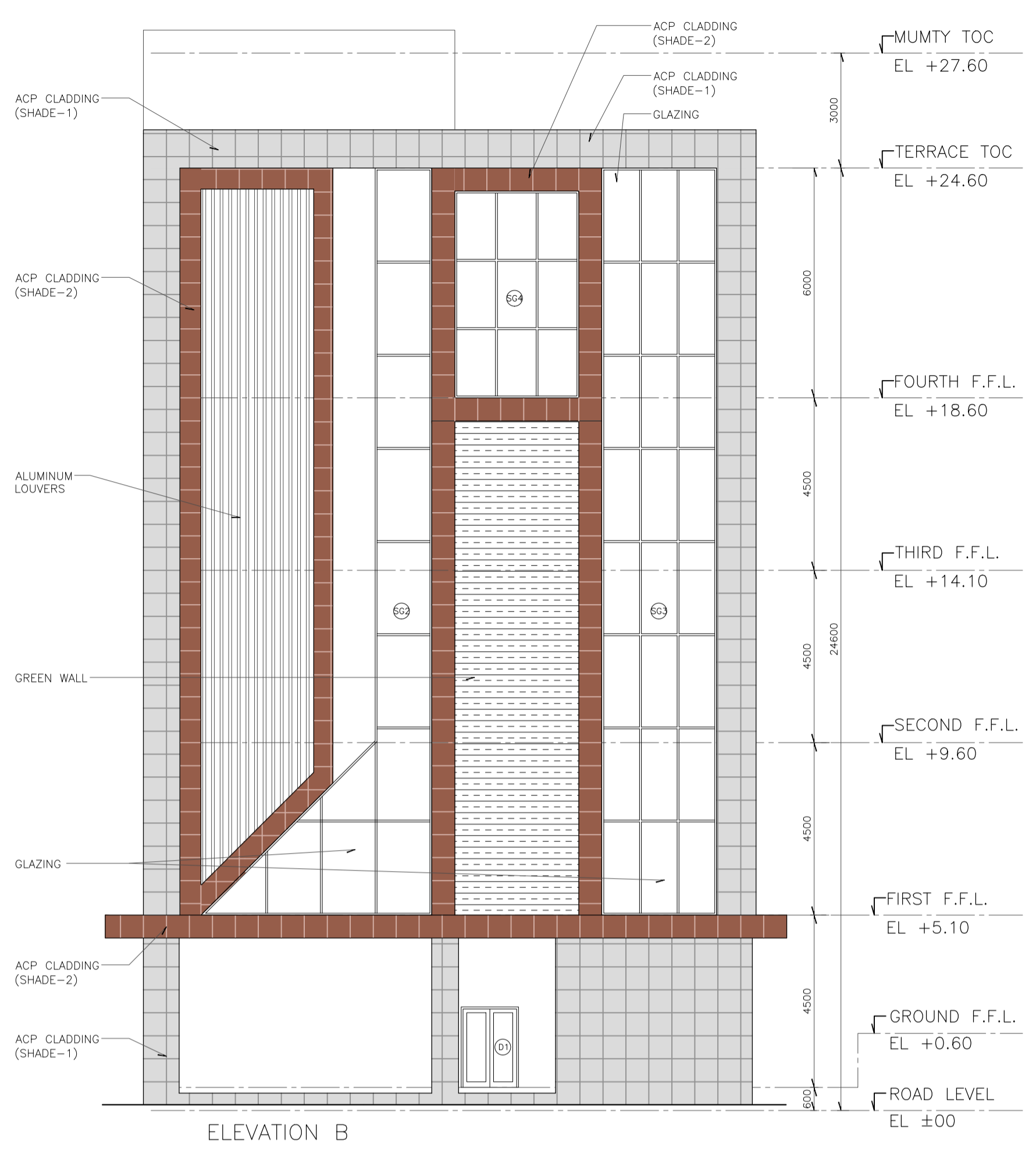
NOTES:

- ALL DIMENSIONS ARE IN MILLIMETERS AND ELEVATIONS ARE IN METRES, UNLESS OTHERWISE NOTED.
- ALL THE DIMENSIONS SHALL BE CHECKED AND VERIFIED AT SITE.
- DRAWING SHALL NOT BE SCALED, WRITTEN DIMENSIONS SHALL BE FOLLOWED.
- ALL FLOOR LEVELS MENTIONED ARE FINISHED FLOOR LEVELS UNLESS OTHERWISE NOTED.
- ALL DIMENSIONS ARE INDICATED CONSIDERING UNPLASTERED MASONRY/ CONCRETE UNLESS OTHERWISE NOTED.

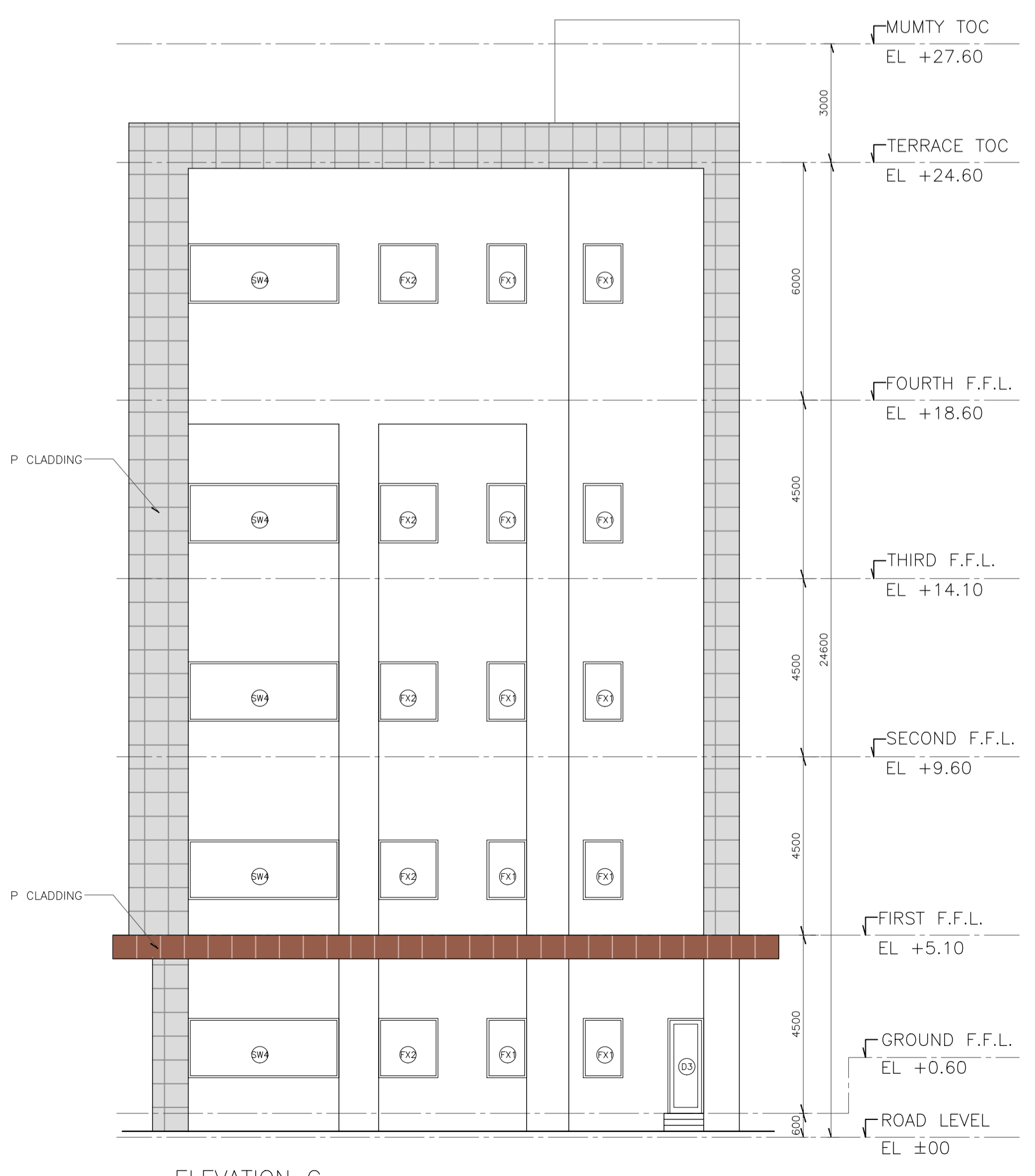
ENGINEERING REFERENCE DRAWINGS/DOCUMENTS:



ELEVATION A



ELEVATION B



ELEVATION C

FOR TENDER PURPOSE ONLY
DO NOT SCALE
P (PRELIMINARY) ISSUES ARE NOT TO BE USED FOR CONSTRUCTION / FABRICATION BUT ARE ISSUED FOR LIMITED PURPOSES ONLY AS INDICATED IN THE SMALL BLOCK ABOVE THIS BLOCK.
CONSTRUCTION / FABRICATION WORK IS PERMITTED ON 'R' (RELEASED) ISSUES ONLY.
INFORMATION CONTAINED WITHIN 'HOLD' IS NOT RELEASED FOR CONSTRUCTION / FABRICATION. FIELD MUST GET DESIGN OFFICE TO CLEAR HOLDS IN TIME BEFORE PROCEEDING WITH ANY CONSTRUCTION / FABRICATION WORK RELATED TO HOLDS.
Proprietary rights of the information contained herein belong to TCE. This information is intended to be used for the mentioned purpose/project only. In case of misuse of information and any claim arising thereon, cost and consequence will be on the party misusing the information.

SIGN.																				
INITIALS																				
REVISIONS																				
SIGN.																				
INITIALS																				
REVISIONS																				
P0 SIGN.																				05-05-2020
INITIALS	SD	NM	NM																	
ISSUE	DRN	DSN	CHD	CV	EL	IC	ME	PL	HVAC	EXT	LS	PE/PM	APPD	DATE						

GUWAHATI SMART CITY DEVELOPMENT AGENCY LTD.
SMART CITY MISSION GUWAHATI

ELEVATIONS

TATA CONSULTING ENGINEERS LIMITED
MUMBAI

SCALE : 1:100 DWG NO TCE.10477A-AC-1007-AC-10121 ISSUE P0
DC & DISC: DEL-AC

FILE NAME : TCE.10477A-AC-1007-AC-10121

TCE FORM NO. 091 90

